

# EBS

Entersoft Business Suite® a comprehensive and integrated business software suite for ERP, CRM, Retail, WMS, MRP, Mobile, e-Commerce and Business Intelligence applications, provides a competitive advantage for modern medium and large enterprises wishing to integrate innovation and high technology, in combination with an extroverted, progressive development strategy.



functional areas	4
functionality out-of-the-box	5
configurability	6
interoperability	7
key-benefits	8
international assessment	9
EBS in numbers	10
industries	12
indicative references	14

# functional areas

	Sales & Distribution		Retail store management
	Procurement & Supply Chain		Customer relationship management
	Warehouse management		Customer service
	Production & Manufacturing		Marketing management
	Finance & Accounting		Mobile SFA & Merchandising
	Project management & Costing		Mobile Field Service
	Budgeting P&L		Mobile xVan e-Invoicing

# functionality out-of-the-box

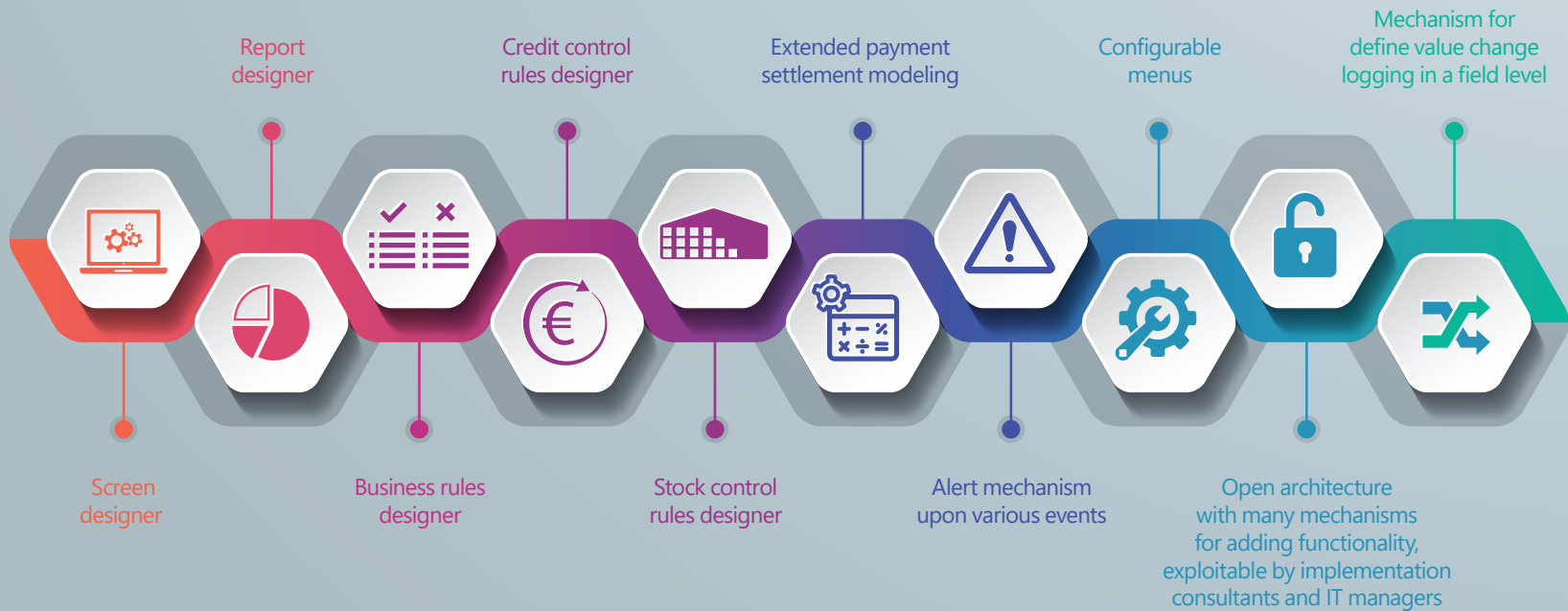
Over than  
**1.000**  
ready-to-use  
business cases,  
transaction  
documents,  
staff actions,  
activities and  
work-flows

Over than  
**1.500**  
views & reports  
for facilitate users'  
every-day-life

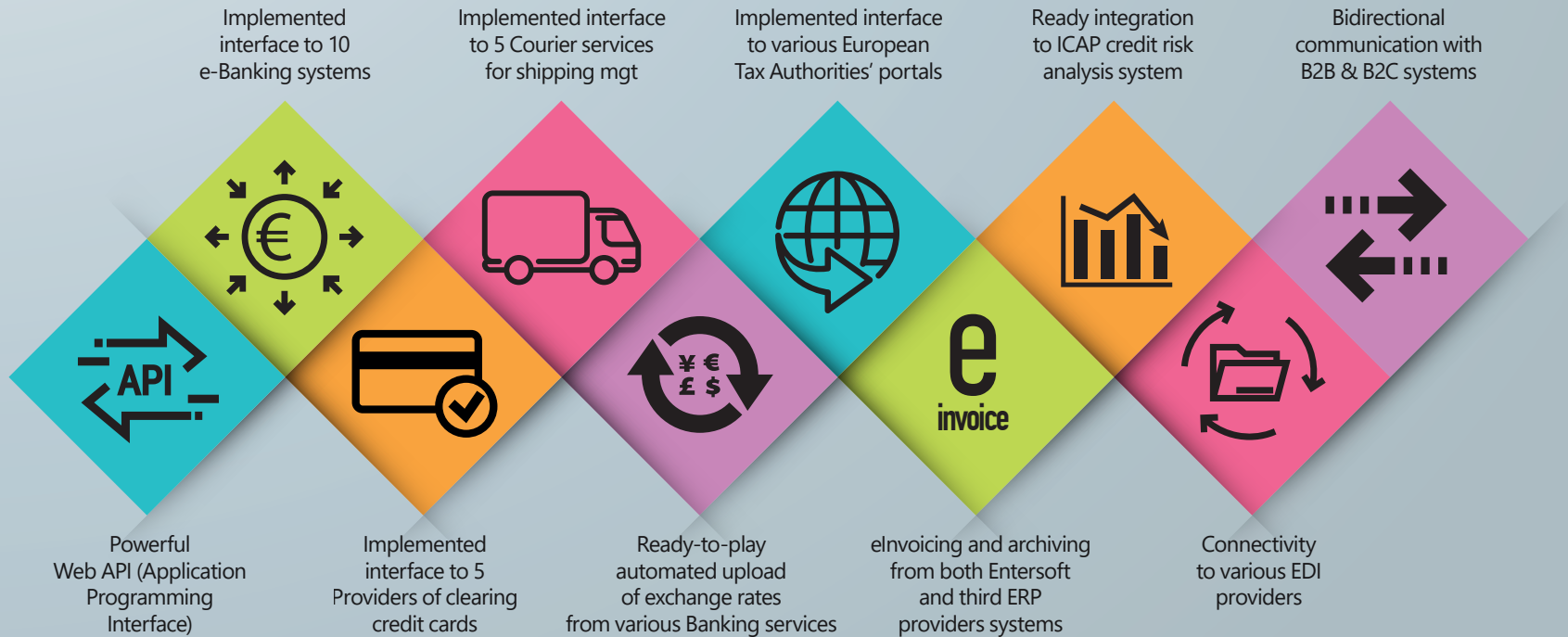
Over than  
**200**  
business  
intelligence  
analysis  
components

Ready-to-adopt  
default configuration  
data, screens, forms,  
chart of accounts,  
data interchange  
scenarios, business  
rules and checks

# configurability

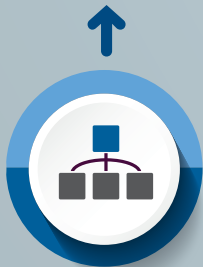


# interoperability



# key-benefits

Organize all branches, units and activities of the enterprise through a unified system



Promote collaboration

Protect and insure your data



Rely on an open system with concrete interconnectivity layers

Design & schedule automated business flows



Prevent and control liquidity

Minimize paper



Optimize stock levels

Minimize external work sheets



Increase your customers' satisfaction

Minimize errors in data caused by human intervention



Increase productivity



# international assessment

THE **FIRST** AND **ONLY** GREEK COMPANY WHOSE SOFTWARE IS CERTIFIED BY AN INTERNATIONAL ASSESSMENT INSTITUTION



See indicative comparative videos on the Entersoft channel on Youtube

Learn about the Assessment Institution at [technologyevaluation.com](http://technologyevaluation.com)

# EBS in numbers

in **40**  
countries



**4.500**  
enterprises



**20.000**  
active users



**45.000.000€**  
avg invoicing value  
over EBS per day



**24.000**  
avg number of invoices  
over EBS per day

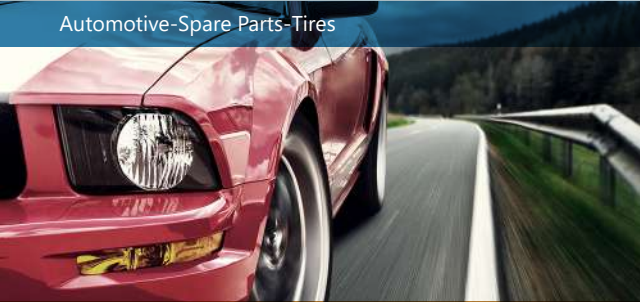


over than  
**20 years**  
in market



# industries

Automotive-Spare Parts-Tires



Manufacturing



Agricultural products



Building and Construction materials



Publications



Fashion and Footwear



Shipping Supply Services



Retail & Franchise



Media





Hospitality



Organizations - Unions



Professional Services



Food-Beverage



Telecom products and services



Construction



Electronic and Scientific Equipment



Pharmaceutical



Wholesale and Distribution



# indicative references





Hondos Center

ΚΩΤΣΟΒΟΛΟΣ



IANOS



L'ORÉAL



ELECTRO NET



AstraZeneca 

SHOP & TRADE 



LAPIN HOUSE

χρυσός οδηγός



CALIN group



TSAKIRIS MALLAS 

EPT



FREZYDERM



TERNA GEX TERNA GROUP



**ENTERSOFT**

Software for ambitious enterprises

**Athens:** T: +30 211 101 5000, F: +30 211 1015005 | [info@entersoft.gr](mailto:info@entersoft.gr)

**Thessaloniki:** T: +30 2310 804840, F: +30 2310 804845 | [info@entersoft.gr](mailto:info@entersoft.gr)

**Sofia:** T: +359 29 798 989, F: +359 29 753 976 | [info@entersoft.bg](mailto:info@entersoft.bg)

**Bucharest:** T: +40 21 230 12 01, F: +40 21 230 12 00 | [info@entersoft.ro](mailto:info@entersoft.ro)

**Dubai:** T: +971 4 551 9388 | [info@entersoft.ae](mailto:info@entersoft.ae)

[www.entersoft.eu](http://www.entersoft.eu)